

CONTENT

NOUVELLE FRANCE

NEW VERSAILLES

TANGO

WOOD VENEER SERIES

CLASSIC VENEER
LIGHT LUXURY VENEER
ART VENEER

LACQUER SERIES

METALLIC LACQUER

GERMAN MELAMINE

IMPORTED ACRYLIC SERIES

NEPHRITE SERIES

PAINT SERIES

TRADITIONAL PAINT
SKIN FEEL PAINT

SOLID WOOD SERIES

GERMAN MEMBRANE SERIES

NOUVELLE FRANCE



SEINE

Parisians refer to the area north of the Seine River as the right bank, where there are many high-end department stores, boutique shops, and restaurants representing modernity; And south of the Seine River is called the Left Bank, where there are many colleges and cultural education institutions, representing cultural heritage, just like the Seine River Art Kitchen. The Italian veneer on the left bank represents high-end art presentation, and the Italian metallic lacquer on the right bank represents modern fashion; The Seine River Art Kitchen officially integrates the ultimate expression of art and modernity.





BOMBARDIER

The design inspiration for the Bombardier gentlemen's wardrobe comes from the high-end design philosophy of Bombardier yachts, featuring a subtle color palette, luxurious materials, and exquisite storage functionality. It creates a private space that combines practicality with symbolic representation of status. Through its unique design language and the application of high-end materials, it seamlessly integrates functionality with aesthetics, becoming an ideal space for gentlemen to showcase their personal taste and lifestyle.



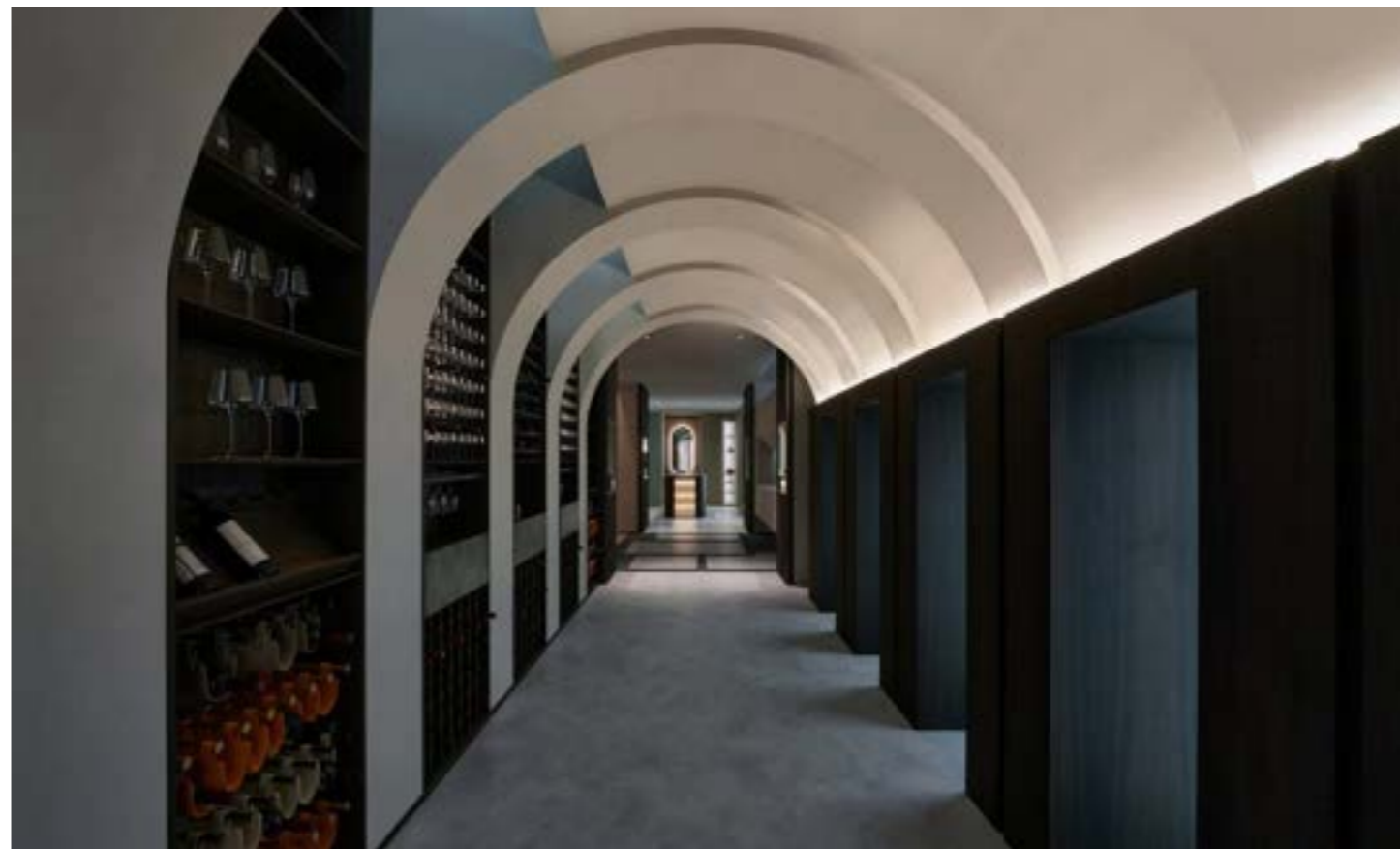
BIRKIN

The design of the Hermès brown bedroom is not only a pursuit of luxurious living, but also a profound interpretation of art and quality. Through advanced color matching, luxurious materials, and exquisite craftsmanship, it creates a private space full of artistic sense, perfectly embodying the high-end brand's understanding of luxury goods and the unique charm of exploring the lifestyle of elite individuals.



SPEEDY

The design of the SPEEDY women's cloakroom centers around the classic LV checkered pattern, showcasing a unique blend of luxury and artistic flair through a variety of artistic techniques and premium materials. The SPEEDY women's cloakroom is not merely a space for storing clothes; it is a personal sanctuary imbued with artistic sensibility and individuality, perfectly embodying the fusion of modern minimalism and innovative luxury.



BARCELONA

The design of the Art Lounge at Barcelona unfolds in the language of art, seamlessly integrating the luxurious amenities of a mansion with artistic elements to create a social space brimming with high-end taste and visual impact. With its unique design language, it perfectly combines art and functionality, transforming into a social space imbued with luxury and artistic flair.



BEETHOVEN

Design inspiration is drawn from Beethoven's musical compositions, known for their strong rhythmic sense and dynamic variations. These elements are translated into high-end, customized linear designs, such as the design of a lattice water cabinet, characterized by clean straight lines and dynamic forms. The space is crafted using Italian minimalism and luxury, creating a sense of rhythm. Through the clever use of Bentley Gray and Nouvelle France-style carvings, combined with modern materials, this series of spaces exudes a unique artistic ambiance and luxurious texture.



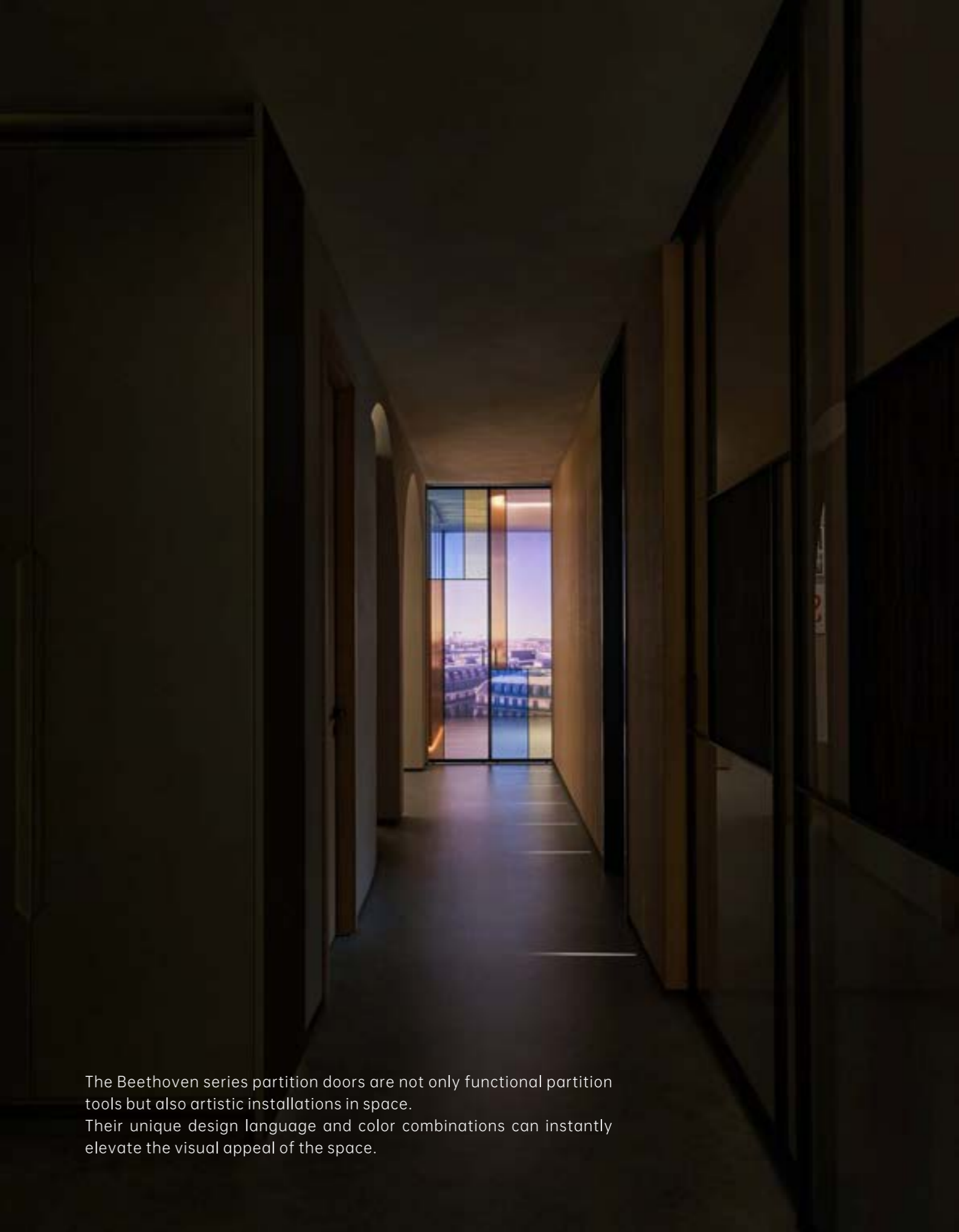
VAN GOGH

That is a creative space designed specifically for designers, inspired by Van Gogh's former residence in Vienna and his artistic career filled with passion and creativity. This space aims to spark boundless inspiration for designers and provide a creative environment filled with an artistic atmosphere.

WINGED VICTORY

Mona Lisa represents the pinnacle of painting art. Then, the statue of the goddess of victory is a masterpiece of sculpture art. This statue from ancient Greece has captivated countless audiences with its unique charm.





The Beethoven series partition doors are not only functional partition tools but also artistic installations in space. Their unique design language and color combinations can instantly elevate the visual appeal of the space.



In the gentle space, the delicate Nouvelle France lines on the walls and the three-dimensional texture of the diamond paulownia stand out, highlighting the Nouvelle France light luxury style where simplicity and art coexist. Here, one can enjoy the ritual of encountering ingredients. The space features clear lines of movement, interconnected areas, and a harmonious whole. Not confined to traditional frameworks, it embraces the melodious symphony of vessels in the environment with a flowing posture, carrying the everyday moments filled with the warmth of life.





A minimalist approach satisfies the demand for artistic aesthetics and functional purposes in living spaces. Modern minimalist design showcases a distinct charm with a translucent quality. Stepping into the entrance hall feels like entering another clean and clear world, where everything you see is in calm and serene tones. Without unnecessary or cluttered lines, the space features simplified door, wall, and cabinet designs, plain decorations, and a spacious visual perspective to welcome the homeowner back.



In the transition between dawn and dusk, whispers of the romance and freedom of winds, moonlight, forests, and trees fill the air. Time flows with a growing sense of sluggishness and delay, calming restless thoughts. The serene art studio within the home extends outward, offering an expansive view that feels like being in a poetic, romantic realm, drawing one closer to nature and attuned to the pulse of life.



Simple yet abundant, cleansing the fatigue. Harmonizing the mind and body with the surroundings, returning to one's own energy field. One part in life, one part in discovery. Coming together as textures of inspiration, painting the canvas of a dreamland.





Using concrete as the canvas and light and shadow as the brushstrokes, we construct a breathing sculpture at the heart of the city, writing a spatial epic poem with contemporary art. Every corner hides a secret language of dialogue with the stars. Morning light gently enters through the windows, diffusing across the floor-to-ceiling glass, blending softly with the warmth of home and bringing the scent of century-old camphor trees from the courtyard. Drifting through the open spaces, stirring a few particles of dust to dance in the air, as if the stationary objects are in a silent conversation with nature.

In the warm white space, light and shadow intertwine with tranquility to form a painting. Gentle sunlight sneaks in through the windows, bringing with it a fresh, natural scene.

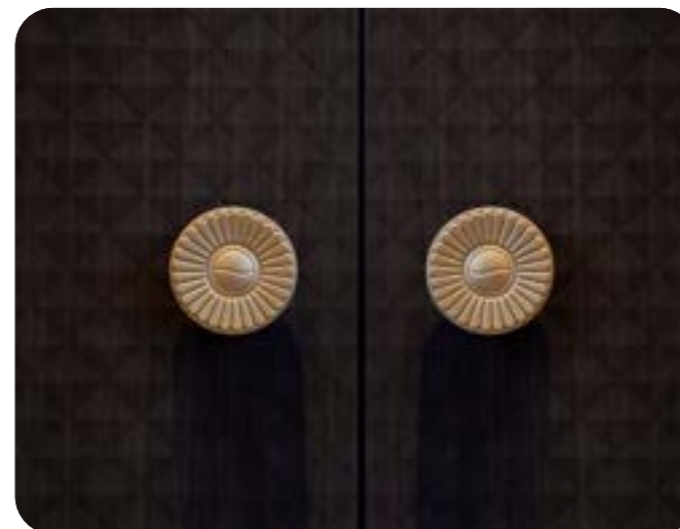




NEW VERSAILLES

NEW VERSAILLES SERIES

It continues the symmetrical architectural style of the Royal Chapel of the Palace of Versailles, with neat outlines and calm, rational beauty blooming infinitely in tranquility. In the criss-crossing order, traditional and complicated decorations are sealed in the torrent of time. Travelers use simple design strokes to decorate the space. The Eiffel Tower and iris can be seen everywhere in the marks of the pen tip, creating a more casual and carefree atmosphere. The lazy tone tells people the beauty of the Nouvelle France style.



NEW VERSAILLES



LIVING AREA

It is a continuation of the symmetrical architectural style of the Royal Chapel of Versailles, with neatly modelled contours, and the beauty of rationality blossoms infinitely in tranquillity. In the regular order, the traditional complex decorations are sealed in time, and travellers use the simple design language to decorate the space. In the imprint of wandering, the Eiffel Tower and the figure of iris can be seen everywhere, telling people the beauty of Nouvelle France style in a more casual and lazy tone. Listening to the echo of the organ from afar, it is as if you have witnessed the dream wedding of Princess Savoy and Duke of Burgundy in the gap of time.

NEW VERSAILLES



KITCHEN & DINING AREA

In the hazy light, the laughter of the old days in the palace seems to jump into the eyes from the vivid paintings. The long table is surrounded by friends and family, slightly drunk and delicious, happiness is overflowing. Travellers put the beautiful vision of the heart into the pen, but also replaced the long table with the kitchen island. The flowing curve extends in the fingertips, dissolving the invisible barrier produced by sharp edges, further pulling people closer to each other. Gazing at each other, sharing life, and giving back to the ordinary daily life with more sincere and abundant emotions.

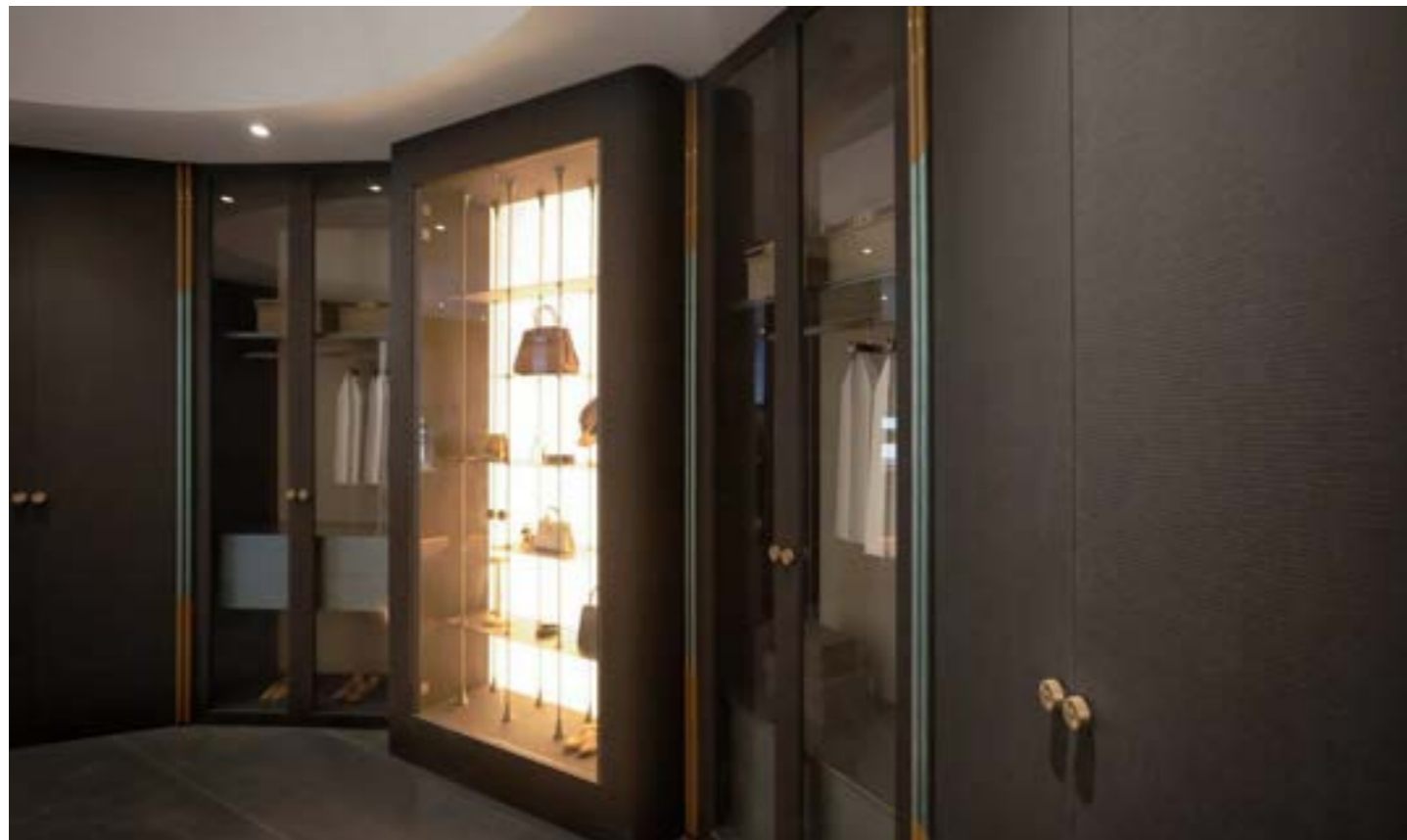
NEW VERSAILLES



SOCIAL KITCHEN

The New Versailles Social Kitchen is centered around the concept of an artistic kitchen, integrating high-end materials such as Italian emerald metallic lacquer, artistic wood veneer and Mexican ebony. It creates a kitchen space that combines ritual sense and social functionality. The core strength lies in the realization of multiple material combinations from design to implementation. The overall creation of the space emphasizes the coherence of details and materials to ensure interactivity with other spaces such as the tea room.

NEW VERSAILLES



WALK-IN CLOSET

Across the realms of time, dance with the partner in a gilded palace. The music of the waltz is warm and cosy, reflecting the intricate ancient patterns. The rococo dresses sway in a gentle, flowing pace that creates a silent, sizzling romance and a dream of glittering elegance. The shadow of the layered skirts becomes the muse of travellers, and the artistic form is the centre of outward expansion, creating the visual focus of the cloakroom. The subtle craftsmanship of each detail hides a sense of elegance, which then infiltrates into life, filling the heart with strength and revealing one's own personal charm from the inside out.

NEW VERSAILLES



ART GALLERY

Strolling through the corridors of the Grand Trianon, imagining the joyous bustle of the past, the setting sun and the shadows on the ground are constantly intertwined. The neurons of artistic inspiration are continuously triggered, and the classic checkerboard grid is transformed into individual units of different colours in the minds. From dots and lines to surfaces, a bright and transparent art gallery gradually emerges. In the symphony of history and the future, you will fall into a dreamy realm and enjoy breathing in freedom.

TANGO



TANGO SERIES

The flourishing French salon art and the intricate French table etiquette in the 19th century formed an essential part of France's local culture, serving as inspiration for romantic artistic connoisseurs. Today, Tango's open-concept spaces provide modern elites with even more possibilities for social scenarios.

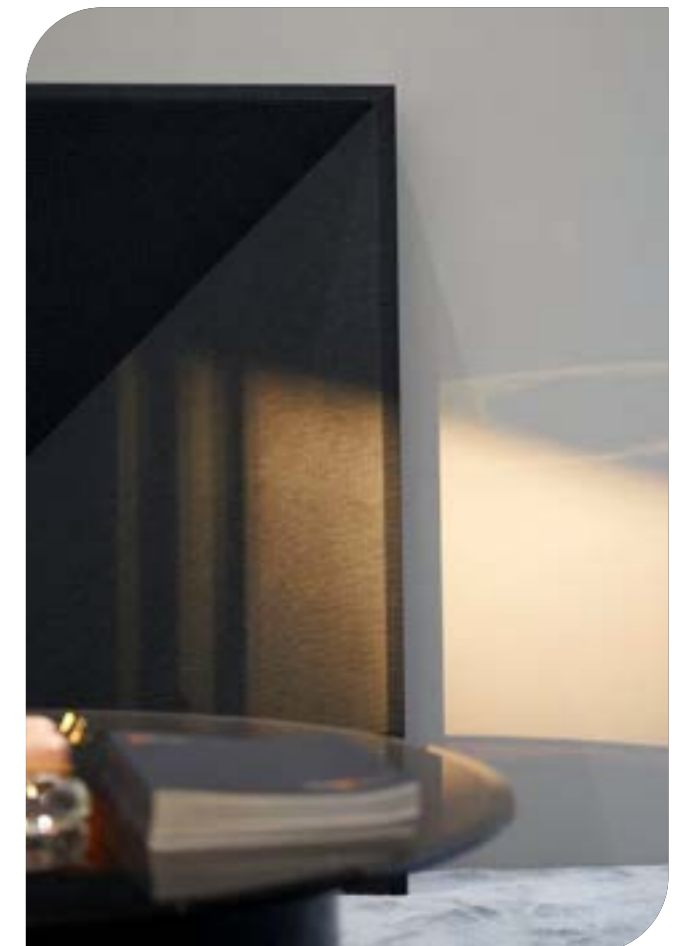


TANGO



SOCIAL KITCHEN

The Tango kitchen island boasts a unique design, combining imported solid wood veneer from Italian master craftsmen with Italian touch-sensitive water-based coating to embody a poetic and meaningful elegant lifestyle concept. The island perfectly showcases its unique curved craftsmanship, combining beauty and fashion, with a 360° design without any right angles, making it more suitable for family members of all ages, who can enjoy the joy of life together.



VILLA HALL

Blending classic French style with modern elements, the space eschews intricate carvings and decorations, opting for a minimalist yet elegant design that captures the essence of a Nouvelle France art villa. The Italian leather-like matte finish of Bentley Gray wall panels provides a pure sensory experience. The open layout emphasizes the interactivity between people and space, creating a warm and inclusive home atmosphere, imbuing the space with a stronger sense of life.



WALK-IN CLOAKROOM

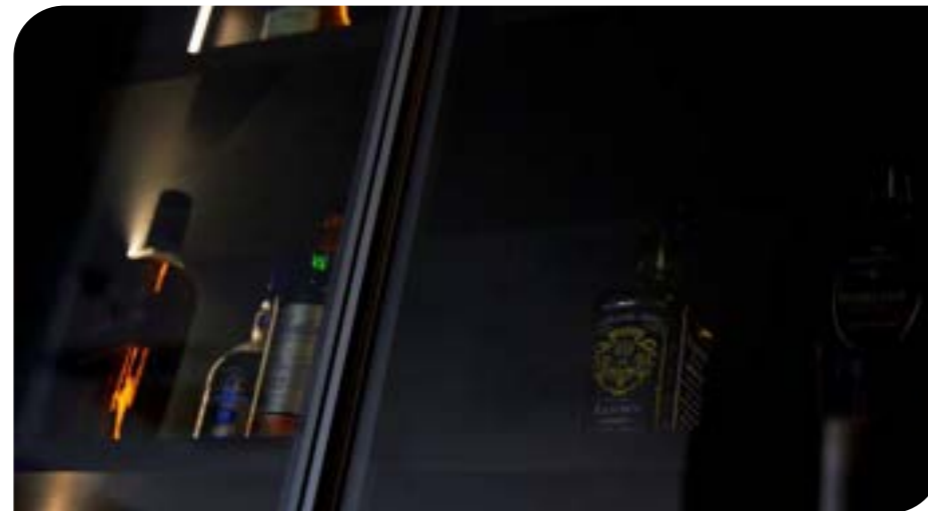
Inspired by the master craftsmanship of France, the international leading Italian solid wood veneer matching technology, combined with luxurious and gentle tones, builds an ultimate aesthetic living space. The open wardrobe breaks the dullness of conventional design and defines a new concept of freedom, showcasing the unique taste and aesthetics of the occupant.



CANADA MAPLE

The wood grain texture is delicate and layered, combined with the slender Roman columns with Nouvelle France characteristics. Under the baptism of soft light, it gives the space an artistic and gentle atmosphere.





TANGO

The highly challenging molding craftsmanship endows the Tango with unparalleled artistic flair, while its multifunctional design offers a versatile experience, providing numerous possibilities for social interaction during family gatherings.



WOOD VENEER SERIES



WOOD VENEER SERIES

Sustainable natural wood

Solid wood is always an excellent choice for custom home furnishings, because it exudes the unique warmth and charm of natural materials. All the wood we use comes from sustainable agriculture and forestry. We use FAS-grade boards and have the high level of American CARB 2 environmental certification in the world.



CLASSIC VENEER

Sammys has worked with many internationally renowned designers to develop space design concepts for the classic veneer series. The options they provide go far beyond traditional custom design and provide a broad interpretation dimension. Open the classic world of Sammys and discover your custom home style.





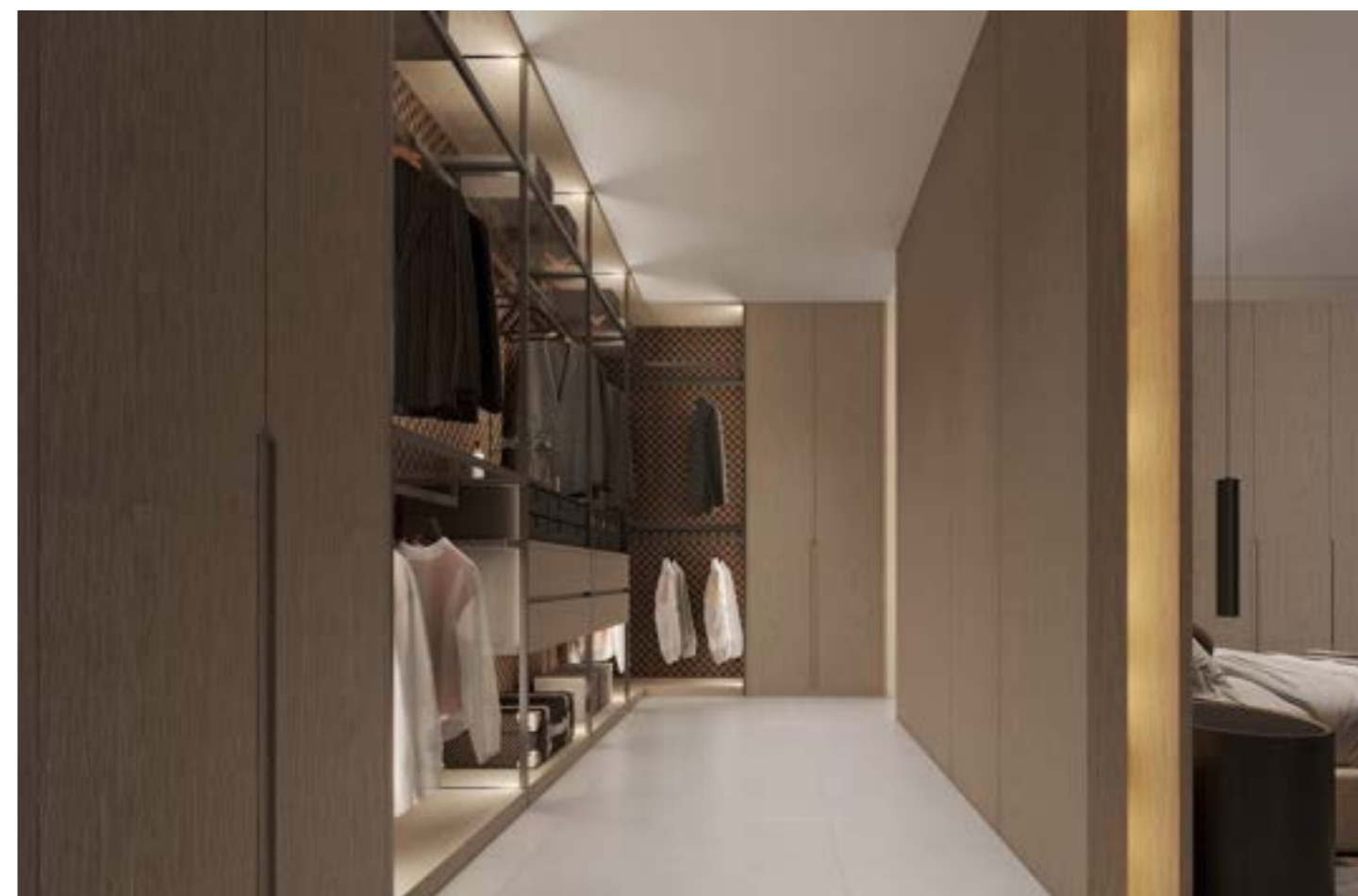
SEEKING QUIET

The outstanding craftsmanship in every detail quietly hides the elegant texture, and then sneaks into life, pouring abundant power into the heart, showing the unique personal charm from the inside out.





The clean lines and the looking exquisite wood texture are natural and continuous. They continue the fashion, elegant, harmonious and romantic "Nouvelle France" style.



Using elegant low-saturated tones, the mature and rational temperament is introduced into light and luxurious design elements. Wood, stone, metal, and fabrics are combined to create a concrete spatial scene, and the artistic atmosphere is quietly revealed.



The Bentley leather cloakroom is inspired by Bentley's classic standard series, creating a sensory experience space that combines vision and touch for urban elites.

COLOR AND SURFACE



L1

L1

L3

L3

L4



MC007

MC008

NA702-0P

NA710-1P

NA818



NA700-3P

NA706-1P

NA710-1P

NA709-1P



KP909

MB011

MC011

SG5004



GS4003

SG4004

VG805



NC700-3

NC700-3A

NC808-1

NCW

LIGHT LUXURY VENEER

Sammys light luxury veneer series has opened up many creative options. With elegant and simple design language, the focus is on the lasting value of exquisite materials and meticulous craftsmanship.





PAGANI

Inspired by the super car Pagani, you can freely shuttle between modern times and the future, and feel the collision of life, technology and culture.

Combined with the floating island created by hidden footlights, it presents a kitchen space with excellent texture.





DESIGN INSPIRATION

Cell differentiation (the source of life)

MAIN STORY LINE

Everything in the world is derived from the differentiation of cells, and the source of life comes from the blue ocean. Italian designer Alessandro Mendini used the scene of cell differentiation as inspiration for his design.





DESERT

The designer performed aesthetic processing on the original wood grain to make the entire finish more layered and give people a feeling of hot and prosperous life.





SPEEDY

The back panel of the dressing mirror in the walk-in closet features a unique artistic treatment that combines the LV checkerboard pattern with the reflective qualities of the mirror. This design not only preserves the classic checkerboard motif but also enhances the sense of space and visual depth through the mirror's reflective effects. This distinctive artistic approach allows the checkerboard pattern to take on a new form of expression amidst the interplay of light and shadow, creating the illusion of a dynamic geometric artwork.





BENTLEY

This kind of wood veneer has been carefully polished through multiple processes. Each process is a carving and refining of the veneer.





BENTLEY

There is no complicated design language, complex decorations are eliminated, and simple tones and colors are used to deconstruct the internal and external spaces, extend the emotions, and present the style and texture before your eyes.



COLOR AND SURFACE



VC-189



VC-190



VC-191



VC-192



V-181



V-182



V-183



VC-193



VC-185



VC-186



VC-187



VC-188



ART VENEER

Through the design of surface color and texture, natural wood can not only convey perfect harmony, but also bring timeless artistic beauty through the unique concept of the designer.





SOCIAL KITCHEN

The New Versailles Social Kitchen is centered around the concept of an artistic kitchen. It integrates high-end materials such as Italian emerald metallic paint, artistic veneer and Mexican ebony. The core advantage lies in the implementation of multiple material combinations from design to execution. The overall design emphasizes the commonality of details and materials, ensuring the interactivity of the kitchen with other spaces like the tea room.





MILAN IMPRESSION

The impression of Milan at dusk is relaxed and gentle, with an ethereal stillness permeating the air. It creates an atmosphere of contemplation and transcendence, where one can lose oneself in the romantic ambiance.





BOMBARDIER

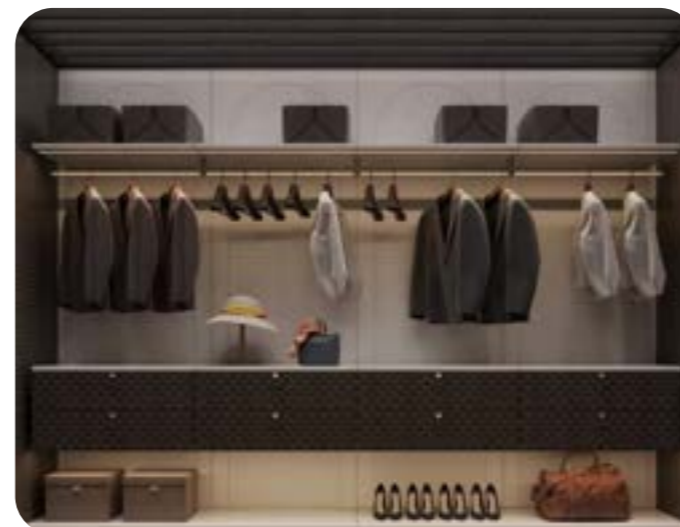
It feels like being in a harbor where the ocean and fashion intertwine, extending a vast and pure view. The boat-shaped island counter with a streamlined design flows smoothly and elegantly, painting a picture of the azure waves. Stop and linger, feel the refined life, and embrace the imagination of the vast world.





WALK-IN CLOSET

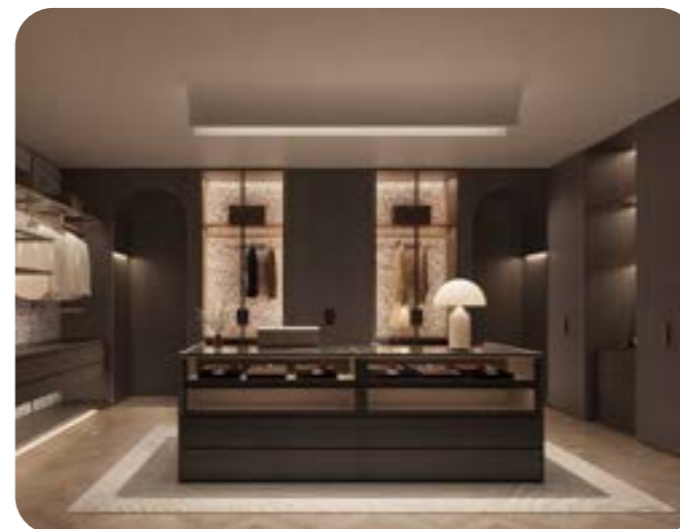
The gentle lights fall on every piece of clothing, giving them a magical shine. The room uses deep brown as the main color, mixed with nice decorations that look both classy and stylish. The neatly arranged closet doesn't just store clothes for all seasons—it also shows the owner's endless hopes and efforts to live a beautiful life.





AVIGNON

The secret garden of fashion and dreams not only accommodates the changing seasons, but also carries the aspirations and pursuits of the occupants towards life. Every time we dress up, it is an expression of ourselves. Every moment we stop to admire the beauty is a careful appreciation.





ART VENEER

The space is inspired by the gifts of nature.
Once you step in and step back,
you will encounter an ideal private residence here.

COLOR AND SURFACE



208VX



209VX



210VXXX



211



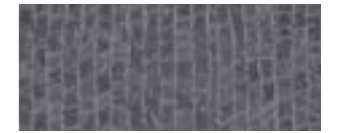
212V



213VXXXX



215V



216V



195



196



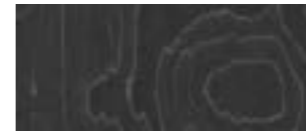
197



198VX



217V



218V



219V



220VXXXXX



199V



200V



201V



202VX



221V



222



223VX



203V



205V



206V

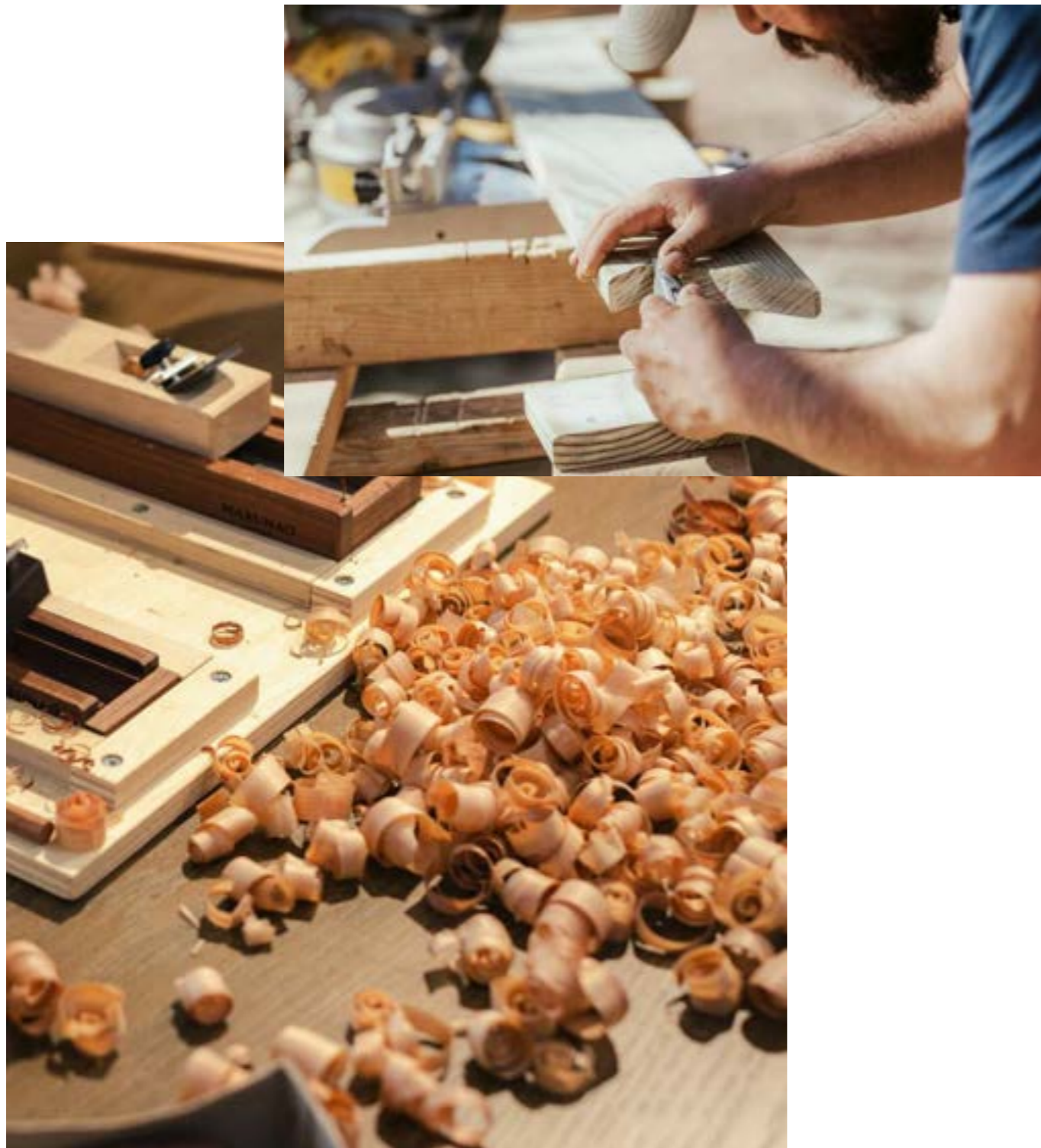


207VX

LACQUER SERIES

The metal baking paint film is hard and wear-resistant, has strong adhesion, and has strong corrosion resistance and UV resistance, which can comprehensively improve the service life and cleanability of the coating.





METALLIC LACQUER

Sammys metallic lacquer series has opened up many creative options. with elegant and simple design language, the focus is on the lasting value of exquisite materials and meticulous craftsmanship.





AUXERRE

Delicate and soft wood, reserved and restrained.
Embraces all in peace, leisure and comfort.

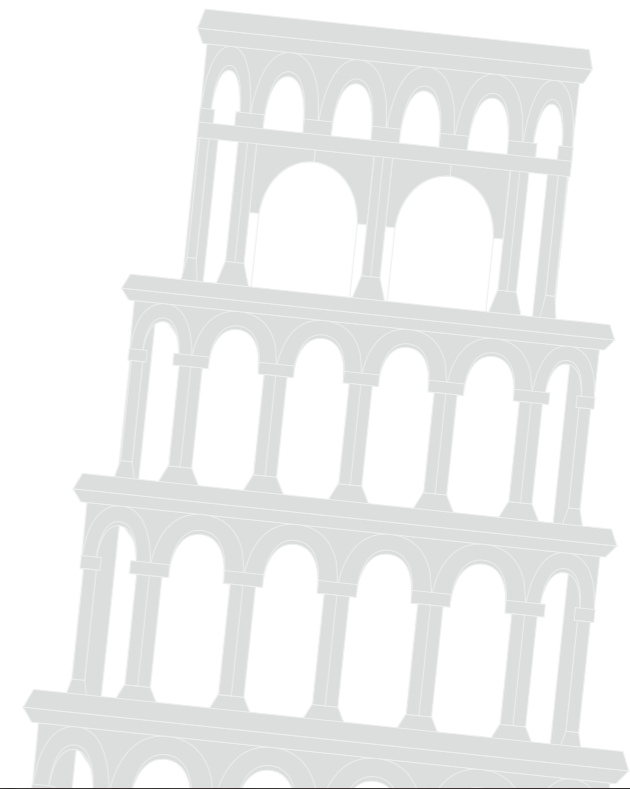


The dream room is like this. We are deep in it,
but we don't know where nature ends and where art begins.

FOGO

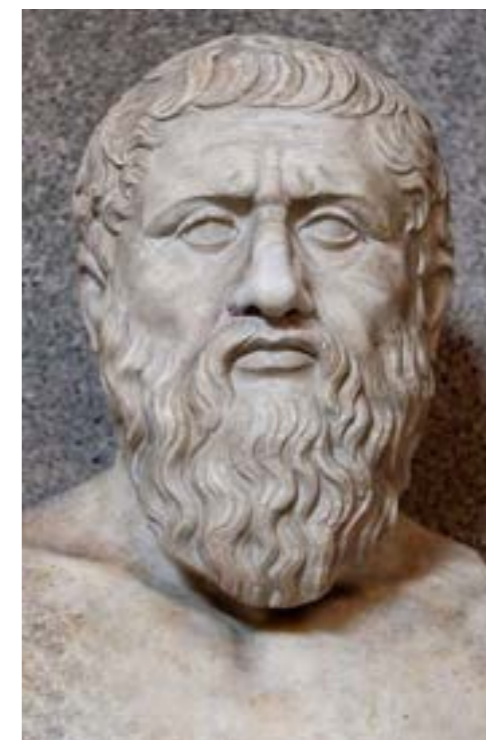
Imported from Italy
Six-sided original edge banding
Safe and environmentally friendly without fingerprints

Multi-color texture selection
No straightener needed for one door to top
Stable and durable





The subtle and meticulous design aesthetics of the Fogo series demonstrate the personal characteristics of self-confidence, elegance and loyalty to one's own style.



PLATOS

The quiet and restrained maple shade gray is one of the most popular colors in European top designs in recent years.

The integrated design of the wall cabinet, using simple lines, combined with the collocation of the open cabinet, is classic and versatile, integrating beauty and practicality.



CARPI

The wood color is calm and harmonious, with natural textures honestly telling endless stories through sunlight.

COLOR AND SURFACE



XM-895



XM-899



XM-2596



XM-2597



XM-2598



XM-8100



XM-8101



XM-8105



XM-881



XM-882



XM-883



XM-885



XM-886



XM-887



XM-888



XM-889



XM-890



XM-891



XM-892



XM-893



XM-8106



XM-8107

GERMAN MELAMINE

The custom home surface developed by Sammys is carefully selected by our design team to create a harmonious visual impact.





ROUEN

The design of the kitchen space takes the form of a minimalistic style, with a collision of multiple materials that perfectly expresses the aesthetic preferences of the owner's home.



The shades of grey of the different materials and the interlocking lines highlight the layers, giving an understated elegance without losing the integrity, emphasising a purer living aesthetic.

LECCO

The deep and three-dimensional vertical wood grain is dense and is applied to the wall panel in combination with the wooden grille, bringing rich changes to the space.





Calm colors, simple lines, and the balance between sensual materials together interpret the calm style of the space.



RICK

After Sammys exclusive color steel plate embossing molding, the subtle color palette hides the designer's exquisite design techniques, creating incredible color expression.



The color is pure and not frivolous, interpreting the charm of the color against the light. It is soft, which can provide a comfortable breathing space.



ICE WHITE

The built-in appliances are integrated into the walls, and the simple lines support the gorgeous texture. The overlay of tones and materials creates a visual impact.



The tiny details in the structure add a sense of spatial layering.
The illumination creates an elegant and stylish artistic atmosphere.



With white as the dominant colour, the space exhibits a restrained simplicity and shows a calm and rational mood.



With the concept of social interaction, it breaks the limits and shackles to create an open interactive scene with multiple possibilities.

COLOR AND SURFACE



GM-8606



GM-8607



LM-831



LM-8201



LM-8202



CM-8120



CM-865



CM-866



CM8103



HM-8301



HM-8302



CM8108



CM8109



CM8110



CM8111



KM-8502



GM-8601



GM-8602



GM-8603



GM-8605



IMPORTED ACRYLIC SERIES

Color makes our lives colorful and enjoyable-that's why we like to use it to decorate our houses. According to the predictions of various color agencies, these colors will become more popular. Sammys is following the new trend and is expanding its breadth of applications in custom home furnishings.





MORANDI

The matte surface gives people a very relaxing, peaceful and comfortable feeling. Ultra-low reflectivity, reduce light reflection, and soft tones, create a more intimate and more suitable living environment.



Morandi color refers to gray color with low saturation. Morandi color does not refer to a certain fixed color, but a color relationship. The shades named after a series of still life works by Italian artist George Morandi. It is based on a set of color rules summarized in Morandi's paintings.



MORANDI

The matte surface gives people a very relaxing, peaceful and comfortable feeling. Ultra-low reflectivity, reduce light reflection, and soft tones, create a more intimate and more suitable living environment.





STRASBOURG

Mature and stable colors, through high-quality, durable materials and exquisite craftsmanship, last for decades of eternal elegance.

The simple appearance, low-key and spacious storage space and reliable appliances allow you to freely use your cooking imagination.





Breaking down the boundaries between areas, it makes the movement lines more flexible and makes it easier for people to communicate.



Salons, parties and many other social scenarios can be realised in the open kitchen space.



PRATO

Specular highlights

The use of innovative environmentally friendly paint, the mirror high-gloss effect brought by the material, exudes a light and elegant atmosphere.





BARI

Black is inherently domineering and charming, mysterious but can accept all collocations.
Clever material collocation and furniture selection can produce unexpected effects inadvertently.



Black is inherently domineering and charming, mysterious but can accept all collocations.
Clever material collocation and furniture selection can produce unexpected effects inadvertently.



SAINT-DENIS

Antibacterial, easy to clean, anti-pressure and abrasion resistance
It becomes a better choice for the kitchen.

COLOR AND SURFACE



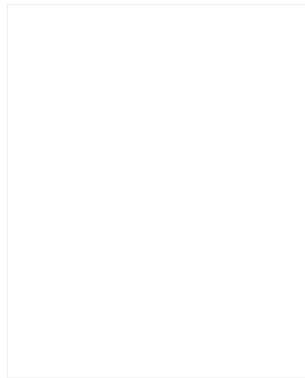
TM16



TM17



TM18



TM01



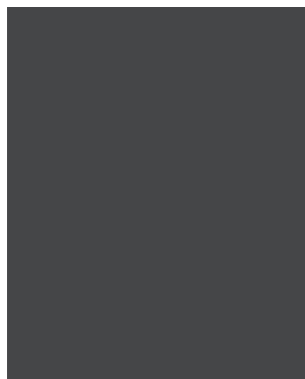
TM02



TM05



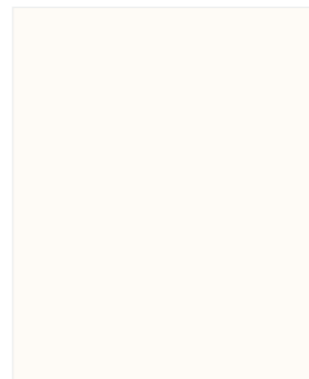
TM09



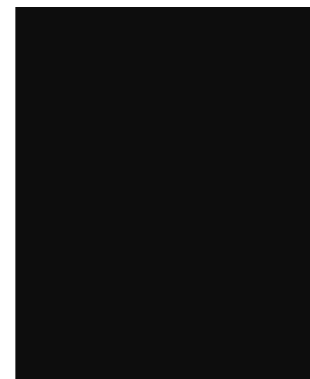
TM10



TM12



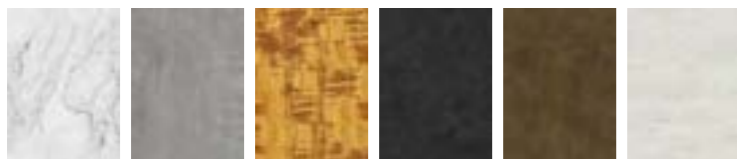
TM13



TM15

NEPHRITE SERIES

The delicate texture of natural stone is carefully crafted by designers to bring the magnificent life texture of the home, emphasizing the traceable visual orientation of pursuing refinement and romance.



FLOWING LIGHT AND GOLDEN SHADOW

Reinterpreting contemporary style through the delicate blend of perfect modern lines and traditional elements makes it a representative of "eternal".





The texture of Burmese golden nanmu presents a silk-like reflective effect, flashing and dazzling fluidity.

PARIS CRYSTAL

The soft and gentle jade texture is added with glitter which is transparent and bright, revealing the atmosphere in a low-key.





PARIS STAR

The thickness of 25mm is blessed, rich in connotation, and it releases a sense of high-level in the space. Long-term use is still long-lasting, allowing agility and beauty to sublime.



Layered and changeable textures give the space rich connotations, forming a unique and rich texture.



NEPHRITE

- High surface hardness (5H), wear-resistant and scratch-resistant
Environmental protection and safety, zero emission
- The surface is resistant to oil stains, easy to clean, clean as new after long-term use
- Incorporating the latest European home design elements, it is the first choice for modern minimalist design.
5mm can be 2 meters high. One door to the top is achieved instantly.
- The Sammys Jade stone door is made 2.7 meters, and it is not deformed without a leveler.
Other brands on the market must add a leveler



The Jade series incorporates pure elegant design. In a modern and concise space, it is both functional and practical, giving a new definition of space, interpreting the design essence of European high-end home furnishing brands, and shaping a moving space atmosphere.



COLOR AND SURFACE



YS12



YS13



YS01



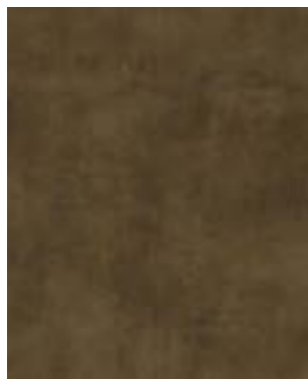
YS02



YS03



YS06



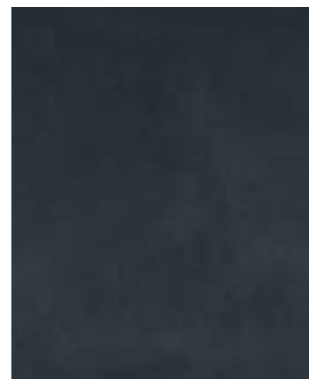
YS07



YS09



YS10



YS11

PAINT SERIES

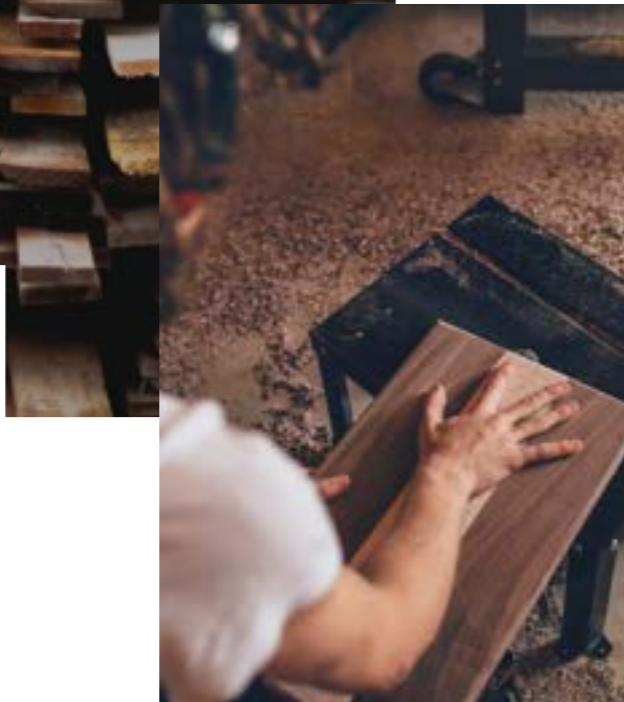
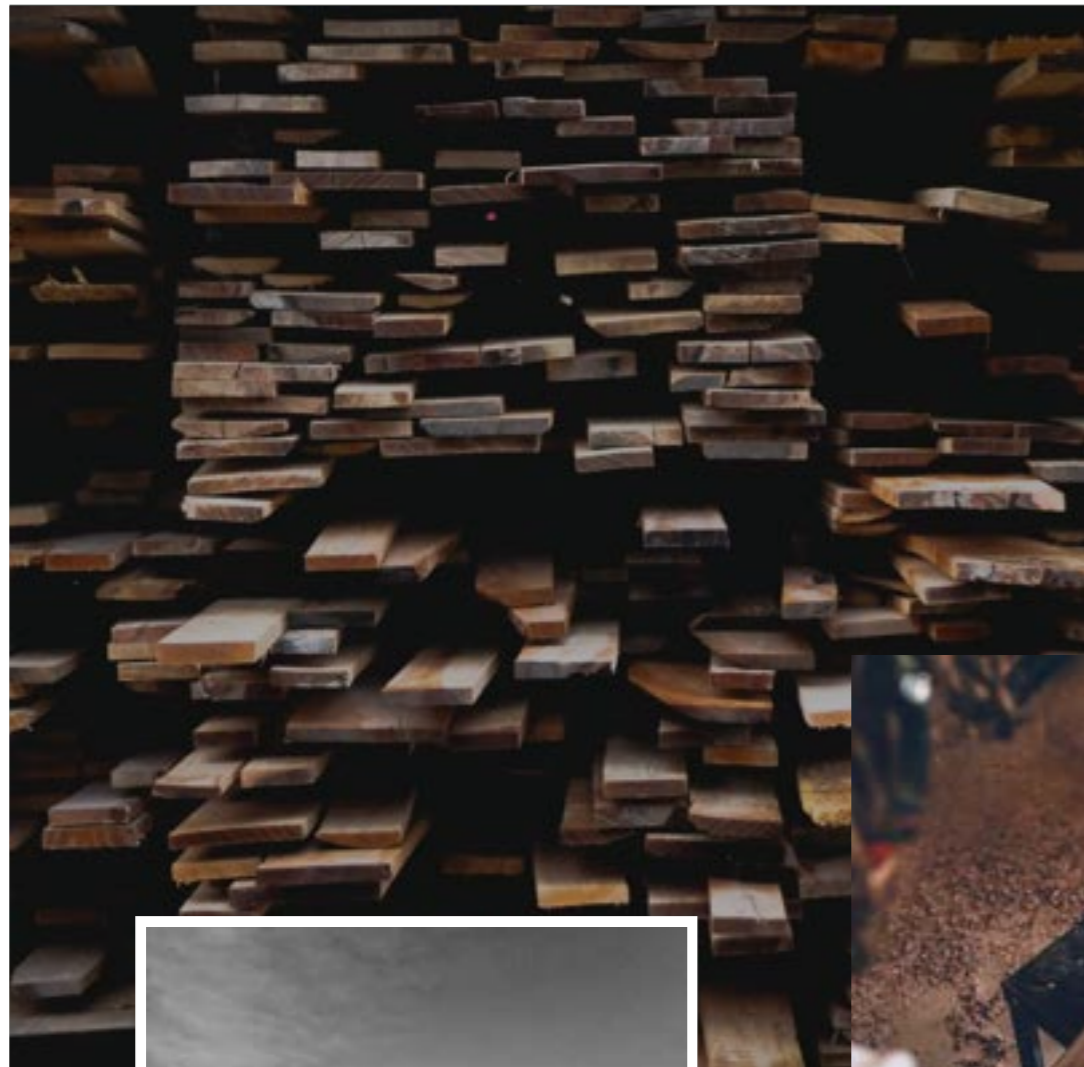
Since 1961, Sammys has been realizing the production and development of a series of kitchen and custom furniture ideas that are almost insurmountable in terms of timelessness and minimalism. Individuality and unusual and exquisite materials, colors and planning options can create tailor-made solutions for individuals.

TRADITIONAL PAINT



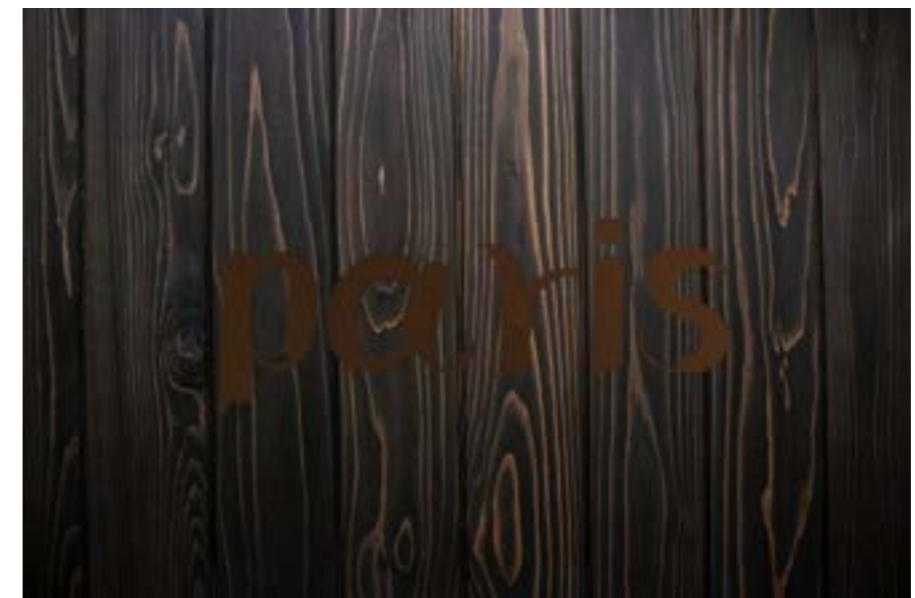
SKIN FEEL PAINT





TRADITIONAL PAINT

The paint color plate developed by Sammys is carefully selected by our design team, which allows each product series to be fully complemented, and at the same time creates a harmonious visual impact. All colors can be matched with each other so that the home can be customized and combined flexibly to achieve the desired effect.



RENNES

The soft skin texture is luxurious, simple, and environmentally friendly, which perfectly balances high-end and simplicity.





The clean lines and white cabinets set off a wealth of ornaments and brightly designed furniture. The light, luxurious and simple design and texture are undoubtedly revealed.

ALSACE

The classic black used in the living room exudes attractive matte and glossy colors, echoing the high-end space.

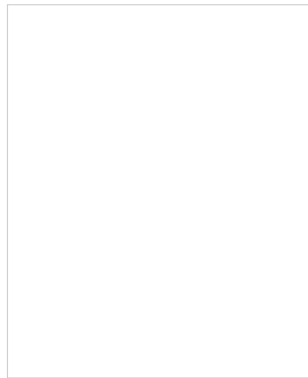
Exuding a quiet and elegant style.
The addition of a warm lint sofa softens the rational space.





Layered and changeable textures give the space rich connotations forming a unique and rich texture....

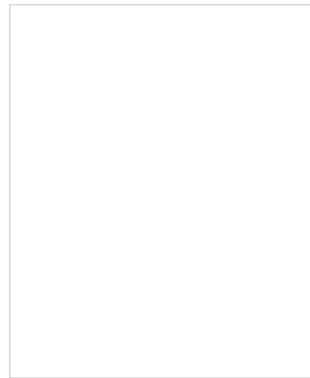
COLOR AND SURFACE



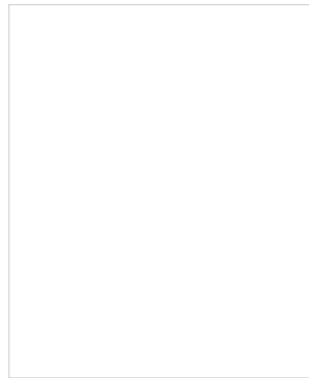
SG3001



SG3002



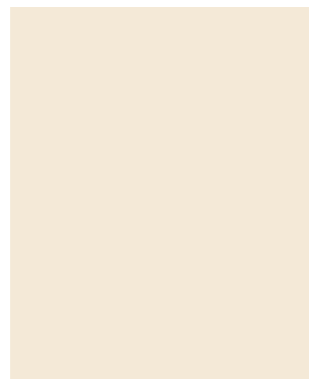
SG4002



SG5002



SG5003



SG5005





SKIN FEEL PAINT

The skin-friendly TOUCH flexible visual imported baking varnish has a delicate and smooth touch. Every time it opens, it is like an open drama, which dramatically attracts people's attention.



LIAT

A well-known interior designer and aesthetic master in Athens
One of the most creative contemporary designers in Athens
Committed to bringing customers the latest innovations
in the field of architecture and design, with great creativity,
talent and professionalism. Accurately grasp
the needs of customers
at all times and create multiple
indoor boutique projects.



Color makes our lives colorful and enjoyable-that's why we like to use it to decorate our houses. According to the predictions of various color agencies, these colors will become more popular. Sammys is following the new trend and is expanding its breadth of applications in custom home furnishings.



BURMESTER

Once again confirming the reputation of Sammys products that transcend time and fashion, and achieve a true combination of shape and function.



The new cloakroom launched by the Voice of Berlin series, with no side panel design and Athens black glass elements allows the perfect integration of classic and fashion.

The Voice of Berlin series exudes classic-bourgeois charm, reinterpreted through contemporary techniques, using precious materials and embellished with delicate details.



North American black walnut wood grain, the craftsmanship echoes the long tradition of carpenters.





SURFACE TREATMENT

All matte Italian water-based baking paint, environmentally friendly and pollution-free, high hardness (greater than 3H), ultra-high wear resistance. According to the human body's most comfortable sensory environment, zero luminosity and zero optical pollution are achieved.

PROCESS

Subversive and revolutionary SOFT TOUCH skin-friendly flexible treatment, large panels are spray painted, and new soft light vision is added to interpret the fluid beauty and demonstrate the master level of Sammys.

DESIGN

Athens Grey + North American Black Walnut Wood Grain window non-sense handle, the color of the handle is the same color and wood grain as the cabinet body, and the natural and graceful wood grain texture is seen in modern fashion.

MAIN MATERIAL

The door panel is North American black walnut wood, the base material is Italian structural solid wood panel, F4 Star environmental standard, super bending resistance and nail holding power, 2700MM one door to the top.





TERNI

The simple and fresh white cabinet is like a smooth picture in the space, and every corner can produce a variety of poetry in the flow of light and shadow.



A cup of coffee, a book,
a piece of warm sunshine play a leisurely and slow life.



TARN

Environmental protection, pollution resistance, waterproof, zero aldehyde,
let the temperament into life from the inside out, showing the texture of space and modern fashion style.





Life needs a good space to carry, from a wooden board to a space, opening up a new space and opening a new life. Treat every important moment in life with a delicate and serious attitude.



TARBES

The unique soft-bake paint new process creatively creates a high-end texture sheet with an extremely delicate and comfortable surface, which is as gentle and smooth as the skin, showing a fashionable texture.



SOLID WOOD SERIES

Classic and timeless design, combined with long-experienced craftsmen, the function is reflected in every detail. The solid wood material contrasts its true colors, and with a variety of detailed functions, it forms a subtle combination of elegant aesthetics and perfect functions.





CHATEAU DE VERSAILLES

The design is inspired by the Baroque style of the Palace of Versailles in France, which is characterized by freedom of appearance, pursuit of dynamic effects, rich decoration and carvings, and strong colors. Often interspersed with curves and oval spaces, it reproduces the luxurious style of Europe.



TIFFANY

Derived from robin egg blue. In the West, the robin symbolizes happiness, and the robin egg is blue. so this color has become the color of happiness in people's hearts.

COLOR AND SURFACE



L1

L3

L4

NA700-3P

L4



L1

L1

L3



Mc007

Mc008

NA710-1P

NC700-3A



NA700-3P

NA702-0P

NA706-1P

NA708-1P

NA710-1P



D3

L1

L3

MB011



NCW

NA709-1P

NA708-1P

GERMAN MEMBRANE SERIES

Look, feel, material, location form are all internal constraints
in product development.





ARMANI ORANGE

The Rollis series gives new vitality elements to the popular colors which is interesting but not obtrusive, exuding unique vitality and personality.



LORIS

The classic French curves blend with modernity to give off a unique charm and show a high-end taste, making home life and hospitality more comfortable.

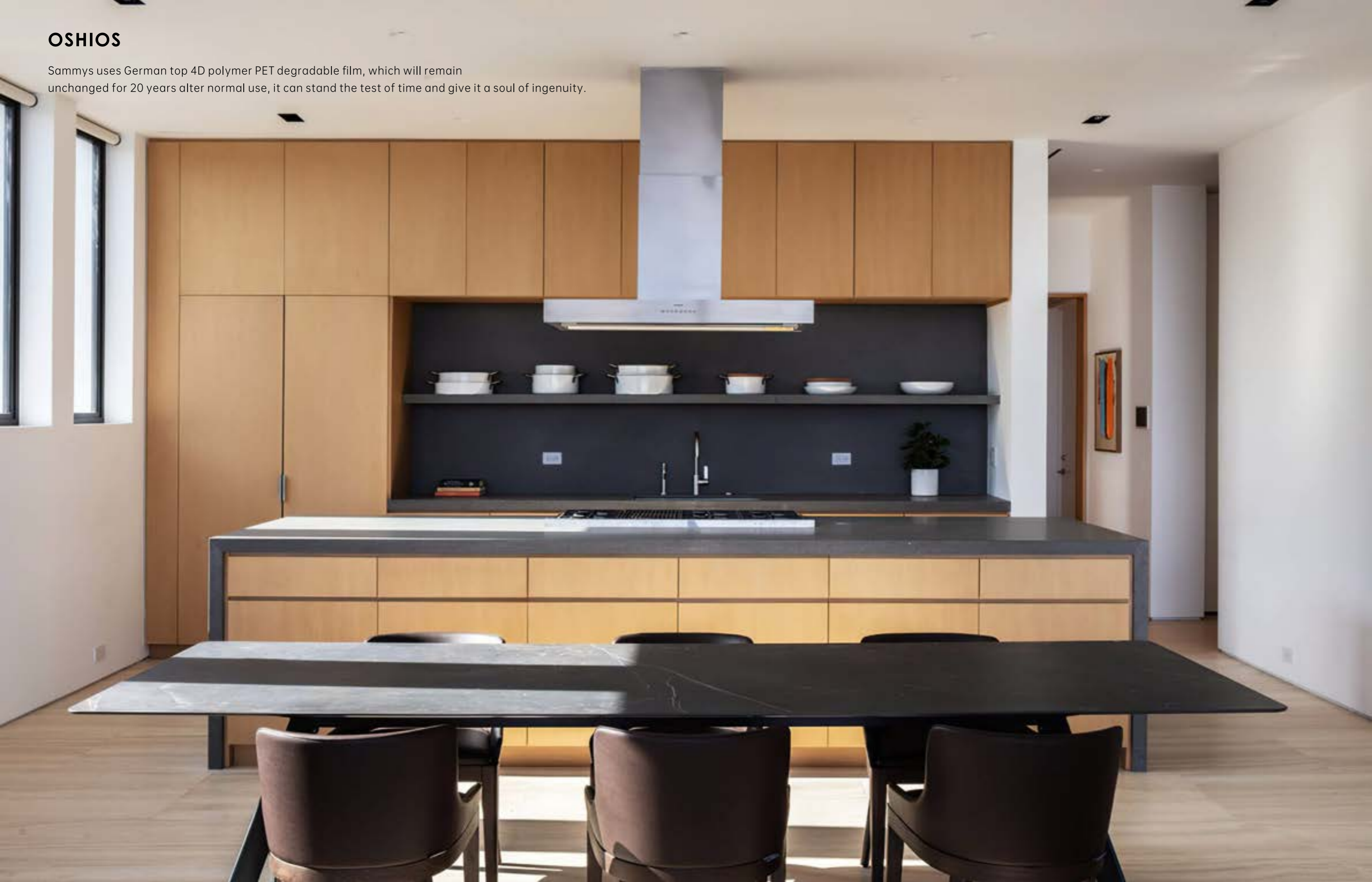
LORIS

The effect of the texture of the materials and the configuration of the colours makes a fresh and elegant kitchen environment.



OSHIOS

Sammys uses German top 4D polymer PET degradable film, which will remain unchanged for 20 years after normal use, it can stand the test of time and give it a soul of ingenuity.





The unique texture brings exquisite luxury,
and the special texture shows luxury.
It has led the trend of high-end custom
home furnishing industry for a long time.

AOSTA

The Italian precision craftsmanship gives the surface design expressive and superb craftsmanship characteristics.





Combined with the zero-formaldehyde nano-adhesive imported from Germany, it is manufactured with excellent quality providing maximum flexibility in the space and ensuring environmentally friendly first-class quality.



After 40,000 revolutions of abrasion test,
it stays intact,
without fear of years of erosion, and builds your leisurely life.



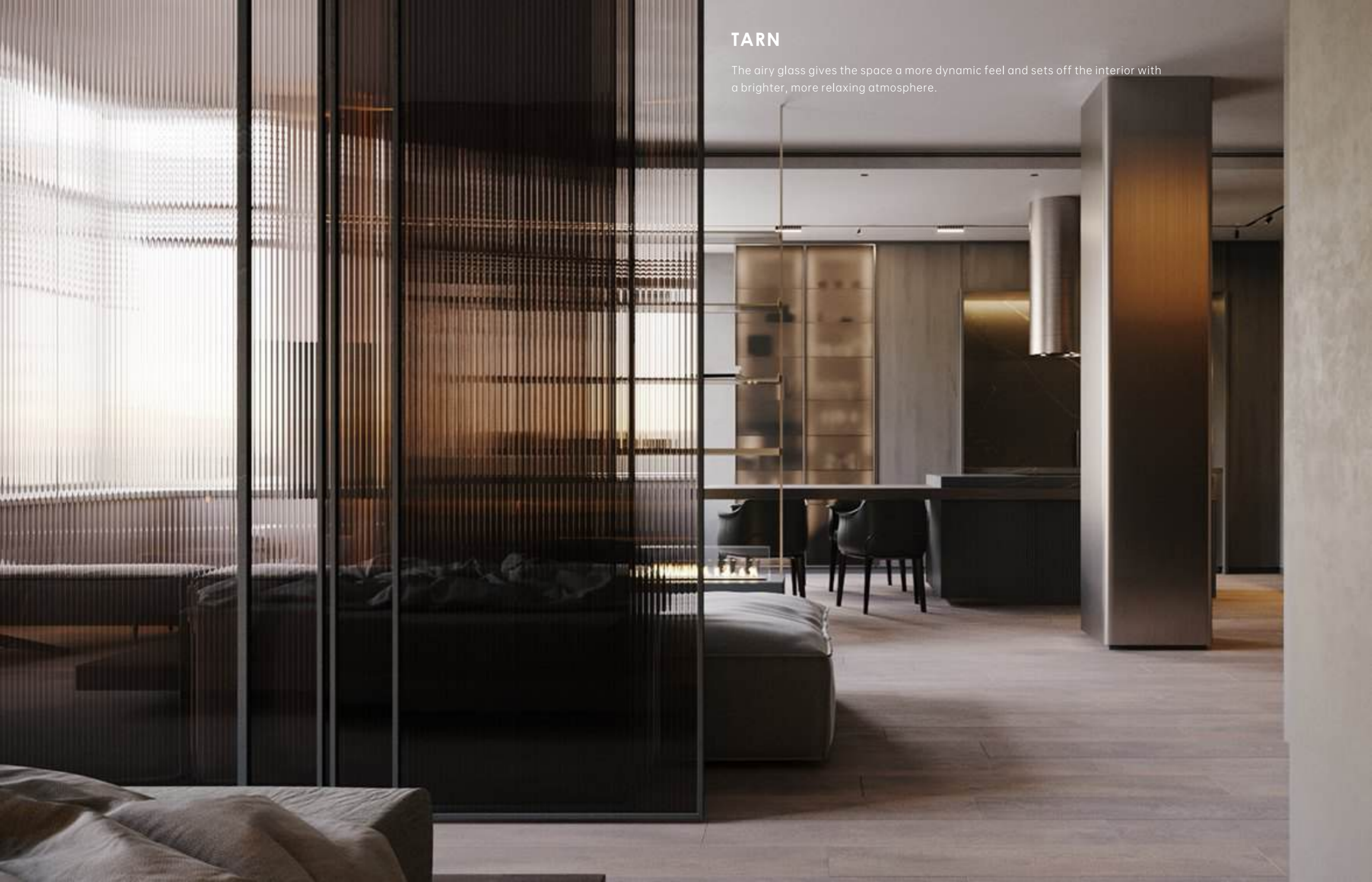
ORNE

The natural charm travels freely in the space, echoing the advanced level with the space, releasing the sense of beauty and hierarchy.



TARN

The airy glass gives the space a more dynamic feel and sets off the interior with a brighter, more relaxing atmosphere.





From the wall to the worktop,
a coherent and comfortable visual experience is
created that brings out the elegance of the space.
With its alternating layers of light and dark
and natural wood textures,
Sammys seamlessly integrates the living and kitchen spaces,
providing an elegant visual communication.



COLOR AND SURFACE

